

SAM Mezcla exterior / chorro plano o chorro redondo estrecho



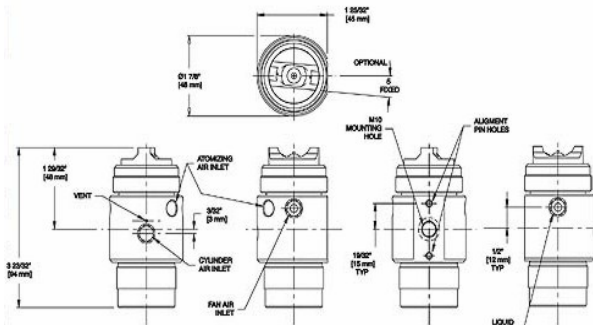
BETE Limited
www.bete.co.uk
 +44 1273 400 092
info@beteuk.com

CONSTRUCCION

• Alimentación separada del aire atomizadora y del aire de camisa resulta en una superficie de pulverización variable y un ajuste preciso del tamaño de las gotitas sin variación del caudal. Una presión aumentada del aire atomizadora reduce el tamaño de las gotitas, una presión aumentada del aire de camisa produce espectros de pulverización anchos.

- Pulverización de sustancias viscosas por mezcla exterior
- Caudales independientes de las cantidades de aire
- Medición precisa del caudal del líquido
- Material: Acero inoxidable 1.4305
- Todos los orificios de entrada 1/8" NPT/Rp 1/8"

SAM Liquid Flow Rates							
Pipe Size	Spray Set-Up No.	Fluid Cap and Air Cap No.	Liquid Capacity GPH @ PSI				
			3 PSI	5 PSI	10 PSI	15 PSI	20 PSI
1/8"	SAM-01-02	FCS 01 & ACS 02	0.7	1.0	1.4	1.7	1.9
	SAM-02-02	FCS 02 & ACS 02	1.1	1.5	2.1	2.5	2.9
	SAM-03-02	FCS 03 & ACT 02	2.2	2.8	4.0	4.9	5.6
	SAM-04-03	FCS 04 & ACS 03	3.6	4.7	6.6	8.0	9.4
	SAM-05-03	FCS 05 & ACS 03	4.9	6.4	9.0	11.0	12.8
	SAM-06-04	FCS 06 & ACS 04	10.0	13.0	18.4	23	26
	SAM-07-05	FCS 07 & ACS 05	18.3	24	33	41	47



Nota: Las combinaciones de pulverización están constituidas por caperuzas de líquido y caperuzas de aire. Las combinaciones son intercambiables pero están dotadas de agujas de diferentes tamaños.

SAM Air Flow Rates												
Pipe Size	Spray Set-Up No.	Fluid Cap and Air Cap No.	Atomizing Air Capacity SCFM @ PSI									
			10 PSI	15 PSI	20 PSI	30 PSI	40 PSI	50 PSI	60 PSI	70 PSI	80 PSI	90 PSI
1/8"	SAM-01-02	FCS 01 & ACS 02	0.44	0.53	0.62	0.82	1.0	1.3	1.5	1.7	2.0	2.2
	SAM-02-02	FCS 02 & ACS 02										
	SAM-03-02	FCS 03 & ACS 02										
	SAM-04-03	FCS 04 & ACS 03	1.6	2.0	2.4	3.2	4.0	4.7	5.5	6.3	7.0	7.8
	SAM-05-03	FCS 05 & ACS 03	1.6	2.0	2.4	3.1	3.9	4.7	5.4	6.2	7.0	7.8
	SAM-06-04	FCS 06 & ACS 04	1.6	2.0	2.4	3.1	3.9	4.7	5.4	6.2	7.0	7.8
	SAM-07-05	FCS 07 & ACS 05	1.8	2.2	2.6	3.6	4.4	5.3	6.2	7.0	7.8	8.6
Pipe Size	Spray Set-Up No.	Fluid Cap and Air Cap No.	Fan Air Capacity SCFM @ PSI									
			10 PSI	15 PSI	20 PSI	30 PSI	40 PSI	50 PSI	60 PSI	70 PSI	80 PSI	90 PSI
1/8"	SAM-01-02	FCS 01 & ACS 02	2.2	2.7	3.3	4.4	5.5	6.6	7.6	8.6	9.6	10.6
	SAM-02-02	FCS 02 & ACS 02										
	SAM-03-02	FCS 03 & ACS 02										
	SAM-04-03	FCS 04 & ACS 03	3.5	4.4	5.4	7.2	8.9	10.6	12.3	14.0	15.5	17.2
	SAM-05-03	FCS 05 & ACS 03	3.9	4.9	6.0	8.1	10.2	12.3	14.3	16.3	18.2	20
	SAM-06-04	FCS 06 & ACS 04	3.9	4.9	6.0	8.1	10.2	12.3	14.3	16.3	18.2	20
	SAM-07-05	FCS 07 & ACS 05	3.9	4.8	5.8	7.8	9.8	11.7	13.6	15.4	17.2	18.8

Standard Materials: 303 Stainless Steel, Blue-guard® gasket, Viton® o-rings

SAM Coverage Chart

Variable Spray, Pressure Fed, Flat Fan or *Narrow Round Spray Pattern

Pipe Size	Spray Set-up No.	Fluid Cap and Air Cap No.	Spray Dimensions with Varied Fan Air Pressure													
			PSI air	PSI liquid	0° PSI			10 PSI			40 PSI			60 PSI		
					A in.	B in.	C in.	A in.	B in.	C in.	A in.	B in.	C in.	A in.	B in.	C in.
1/8	SAM-01-02	FCS 01 & ACS 02	10	3	2	3	4	7	9	10	6	8	11	6	8	11
				10	2.5	3.5	4.5	7.5	10	12	7	8	11	7	8	12
				20	2	3	4	8	12	14	9	11	14	8	10	13
			30	3	2	3	4.5	5	6	7	8	10	14	8	11	14
				10	2	2.5	5	6	7.5	10	8	10	13	8	10	12
				20	2	3	4	7	9	13	10	12	15	9.5	11.5	14.5
			40	3	2.5	3.5	6	5	6	8	8	10	14	9	11	14
				10	2	3	5	6	7	10	9	11	14	9	11	13
				20	2	3	4.5	7	8	12	10	12	14	10	12	15
			60	3	2.5	3.5	6	4	5	6	8	11	13	9	11	14
				10	2	3	5	4.5	5	7	8	10	14	9	12	15
				20	2	3	4.5	5	7	9	9	12	16	10	13	17
1/8	SAM-02-02	FCS 02 & ACS 02	10	3	2	3	4	8	10	12	6.5	8.5	11	6	9	12
				10	2.5	3.5	4.5	8	12	15	9	14	18	7	10	13
				20	2	3	4	8	12	15	9	14	18	8	10	13
			30	3	2	3	4.5	5.5	7	8	8	10	14	8	11	14
				10	2	3	5	7	9	12	10	12	14	9	10	13
				20	2	3	4	7	10	12	13	16	18	9.5	11.5	14.5
			40	3	2.5	3.5	6	5	7	9	8	10	14	9	11	14
				10	2	3	5	7	8	6.5	9.5	12	14	9	12	15
				20	2	3	4.5	6.5	9	12.5	11.5	15	17	11	14	18
			60	3	2.5	3.5	6	4.5	5.5	7	8	10.5	13	9	11	14
				10	2.5	4	5.5	5	6	8.5	9	11	14	10	12	15
				20	2	3	4.5	5.5	7.5	9.5	10	14	18	11	14	18
1/8	SAM-03-02	FCS 03 & ACS 02	10	3	2	3	5	9	12	15	7	9	11	7	9	12
				10	2	2.5	4	12	15	21	12	20	23			
				20	2	3	4	10	12	16	12	18	22			
			30	3	2.5	3	4.5	6	8	9	8	10	13	8	10	13
				10	2	3	5	8	11	15	11	13	13	10	11	13
				20	2	2.5	4	8	12	14	16	20	22			
			40	3	2.5	3.5	5	5	7	10	8	10	13	8	11	13
				10	2	3	5	7	8	11	11	13	15	10	12	13
				20	2	3	5	7	9	13.5	13	18	21	12	17	21
			60	3	2.5	3.5	5.5	5	6	8	8	10	13	8	10	13
				10	2.5	3.5	5.5	6	7	9.5	10	13	16	11	13	15
				20	2	3	4.5	6	8	10	12	18	22	13	18	21
1/8	SAM-04-03	FCS 04 & ACS 03	10	3	2.5	3.5	5	9	13	17						
				10	2	3	4.5	10	14	16						
				20	2	3	4	9	13	17	18	24	29			
			30	3	2.5	3	5	4	5	7	11	15	18	12	15	18
				10	2.5	3.5	5	5	7	9	13	17	22	18	21	26
				20	2.5	3.5	5.5	5	6	9	13	20	24	17	22	27
			40	3	2.5	3	5	3.5	4.5	6.5	9	12	14	11	13	18
				10	2.5	3.5	5	4	5	7	10	14	18	15	18	22
				20	2.5	3.5	5	4	5.5	8	11	15	21	16	20	25
			60	3	2.5	3.5	5	3	4	6	8	10	13	10	12	17
				10	2.5	3.5	4.5	3	4	6	8	11	14	11	15	18
				20	2.5	3.5	4.5	3	4.5	7	10	12	16	12	17	22
1/8	SAM-05-03	FCS 05 & ACS 03	10	3	3	4	6	9	12	18						
				10				8	11	15	24	29	35			
				20				9	12	15	21	28				
			30	3	2.5	3.5	6	4	6	8	12	15	19	12	15	19
				10	2.5	3.5	5	4.5	6	8	14	18	23	17	22	25
				20	2	3	5	4.5	6	9	15	19	27	18	23	27
			40	3	2.5	3.5	6	3.5	5	7	10	13	17	12	14	18
				10	2.5	3.5	5.5	4	6	8	12	16	20	15	18	22
				20	2.5	3.5	5.5	3.5	5	9	13	17	22	16	20	24
			60	3	2.5	3.5	6	2.5	4	7	9	11	14	10	12	17
				10	2.5	3.5	5.5	3	4	6	10	13	16	13	16	20
				20	2.5	3.5	5.5	3	4	6	9	13	17	12	17	23
1/8	SAM-06-04	FCS 06 & ACS 04	10	3	3	4	5	7	10	13						
				10				8	11	15	21	26	33			
				20				9	12	15	17	22	30	22	27	34
			30	3	3	4	5	4	6	8	12	14	21	15	19	22
				10	2.5	3.5	5	4	6	8.5	13	16	22	16	21	23
				20				11	16	21	18	24	21	18	18	24
			40	3	3	4	5.5	3.5	5	7	10	12	17	12	17	21
				10	2.5	3.5	5	4	5	7	11	14	20	14	18	25
				20	2.5	3.5	5	3	5	8	9	13	17	13	18	26
			60	3	3	4	6	3	4	6	8	10	13	10	13	18
				10	3	4	5	3.5	4.5	7	9	12	16	12	16	21
				20	3	3.5	5	3	4	5.5	8	10	15	12	16	21
1/8	SAM-07-05	FCS 07 & ACS 05	10	3	3	4	5	8	11	15						
				10				8	11	15	21	27	35			
				20				9	12	15	19	24	33			
			30	3	3	4	5	5	6.5	9	13	18	23			
				10				6	7	10	13	17	22	17	25	27
				20				14	17	24	14	17	24	18	22	29
			40	3	3	4	5.5	5.5	6	9	11	15	19	17	24	30
				10	3	3.5	5	4.5	7	7.5	12	15	20	16	20	29
				20				12	14	21	12	14	21	14	19	27
			60	3	3	4	6	4	6	8	9	12	16	14	17	21
				10	3	4	6.5	5	6.5	7.5	10	13	17	13	17	23
				20	2.5	3	5	3.5	4.5	6	7	14	15	12	16	24